

# Fakakatoatoaga Manatu

## Gahua2: Ko e Mena Fakaalofa he Agaaga

### Fakakatoatoaga he Puhala ke Taute

#### KUMIKUMI

FANOONO GO KE HE TAU MANATU FAKAKITE (NOVEMA-ME 23)

#### VETEVETEAGA

TAU FAKATUTALAAGA HOKULO KE HALAVAKA MO E MANAMANATU KI AI (IUNI-NOVEMA 23)

#### TAU MANATU FAKAKITE

FAKATŪ MO E FAKAKITE MANATU KE PUHALA AI (TESEMO 23-IULAI 24)

### Fakamooliaga he tau Kumikumiaga mo e tau Fakakatoatoaga

#### KO E FAKAVĒAGA AULO A (VEVEHEAGA 2)

- Ha ha i ai ke he Ekalesia maopoopo ne kua tumau ke fakamooli e tau fakavēaga ne kua auloa ki ai. Moua mai e fakavēaga nei i loto he Tohi Tapu, he Basis of Union mo e tau talahauaga hokulo fakalataha mo e tau fifiliaga ne kua taute tali mai he Kaufakalataha (Union).
- Kua nakai muiua tumau a tautolu ke he tau mena kua fakamooli ki ai, mua atu ke fakamooli e 'Maveheaga' ne taute mo e 'Congress' ti pihia ke he maveheaga ke eke a tautolu mo e Ekalesia kua tino taha pete e kehekehe e tau aga fakamotu mo e tau motu ne o mai ai.
- Kua tumau e mamahi ha ko e fēkehekeheaki he tau taofiaga fakaAtua. Kia kumi atu kia lesu Keriso ko e fakavēaga mo e tūmauaga he ha tautolu a kaufakalataha.
- Kua lata ia tautolu ke tapiki mau ke he tau fakaakoaga he tua mo e kaufakalataha ke atihake ha talu agaaga auloa ko e Uniting Church mo e Ekalesia maopoopo he lalolagi.

#### HA TALU MOUI MO E GAHUA HE MOTU KATO A (VEVEHEAGA 3)

- Ko e mena fakaalofa e Ekalesia he Motu ne moua ai e tautolu e tokanoaga ke fiafia ha ko e ha tautolu a tau aga fakamotu kua lanu kehekehe ai, ko e tūaga foki ke fakakite mo e fetufatufaaki e tau manatu ke he moto tagata.
- Kua fakaaue mo e mailoga he tau tagata e tau gahua he Ekalesia he Motu (National Church). Kua mua atu ni ke he tau fakafetuiaga auloa ne fakatutala e tau manatu, fēhagaiaga mo e falu atu motu, ko e tau fakavēaga fakaAtua he Ekalesia, pihia mo e falu gahua fakamisiona he motu katoa.
- Ke fakamooli mo e kautū e tau fekafekauaga he Ekalesia laulahi, kua lata ni ke fakahagahaga mitaki e tau koloa, mo e malolo e matutakiaga mo e ekalesia maopoopo.

#### KO E AGAAGA FAKAATUA MO E TAU FAKAAKOAGA (VEVEHEAGA 5)

- Ko e agaaga fakaAtua he Ekalesia mo e halavaka he tau fakaakoaga fakalotu ma anoiha, ko e taha vala haia ke fakatupu malolo, moui olaola mo e alaala he Ekalesia.
- Loga lahi e tau fakaakoaga fakaAtua lanu kehekehe ti kua lata ke moua e falu laupapa ke fakatutala e tau fakaakoaga fakaAtua mo e tau agafakamotu kehekehe.
- Kua mahuiga lahi e tau fakaakoaga Tohi Tapu ke lata mo e tau tutaki he tau tagata he Atua putoia ai foki a lautolu kua fakaako ke takitaki e tau fafaahi gahua kehekehe he Ekalesia.
- Ha i ai e manako lahi mae taha fakafetuiaga hokulo mo e olatia mae tau fakaakoaga fakaagaaga pihia ma lautolu ke fakaako mae gahua he Atua. Kua lata ni ke fai fakatokaaga ke taki mo e agaaga feaki e gahua fakalataha.

# Fakakatoatoaaga Manatu

## Gahua2: Ko e Mena Fakaalofa he Agaaga

### Fakakatoatoaaga he tau Kumikumiaga mo e tau Manatu Fakamaopopo (matutaki)

#### KO E TAU MANATU FAKAKITE KE HE TAU PUHALA MAE TAU FAKAPOTOPOTOAGA HE ATUA MO E EKE TUTAKI (VEVEHEAGA 4)

- Kua laulahi ne omoi e tau puhala ki mua, mailoga lahi e tūaga he tau Tutaki mo e Misiona, pihia mo e puhala fakagahua (governance) ne mukamuka ke hiki ke he magaaho kua lata ai.
- Loga e tau hūhū hagaa ke he fakagahuaaga, mua atu ke he fakafetuiaga he tau fakapotopotoaga takitaha mo e Ekalesia laulahi.
- Kua lata ke fakahokulo e tau fakafetuiaga he tau Fakapotopotoaga he Atua (Communities of faith) mo e Ekalesia laulahi mae levekiaga, fakamafanaaga mo e tau lagomatai. Kua mailoga he tau tagata e aoga he tau lagomataiaga foou he Halavaka (Directions) ke feaki e tau fakafetuiaga ia.

#### TAU MANATU FAKAKITE KE LATA MO E PUHALA FAKAGAHUA (GOVERNANCE) MO E FAKAKOLOA (RESOURCING) (VEVEHEAGA 6)

- Kua loga mo e kehekehe e tau manatu fakakite ke lata mo e tau fifiliaga hagaa ia ke he tau kehekeheaga he tau fakavēaga, tau mahuiga mo e tau mena kua mua. Tokologa ne mailoga kua kua nakai gahua e puhala fae uta aki e tau fakaholoaga he magaaho nei ti kua lata ni ke fai hikiaga.
- Tokologa e tagata ne mailoga mo e omoi ke he manatu he Puipui 1. Mailoga e lautolu e lahi mo e uka he fekau ka fakagahua. Omoi foki a lautolu ke he falu vala he falu manatu pulega, putoia ai foki e manatu ke malikiti hake e tau koloa fakaaoga mae tau Fakapotopotoaga takitokotaha; mo e mutu hifo e tau mena kua fatiaki, mo e fakafeheleaki e tau koloa.
- Ko e manatu laulahi ke he matapatu Ekalesia ne pehē, kua hoko mai e magaaho ke fakamalōlō mo e fifili ke taute e hikiaga he agaaga mo e tau puhala fakatokatoka gahua he Lotu.

### Gahua2 Tau Pulega: Lalafi oti e tau manatu fakakite ke he tolu e fakaholoaga (Veveheaga 7 & 8)

#### A. TAU FAKAPOTOPOTOAGA HE ATUA FOAKI MOUI MO E TAUTE TUTAKI

- Fakavē ke he gahua he Taute Tutaki mo e gahua Misiona.
- Ko e koloa lagomatai foou (toolkit) kua lata tonu mae tau puhala fakagahua.
- Ko e kamataaga mo e fakaotiaga kua hagahaga mitaki mae tau fakapotopotaga.
- Liliu onono ke he tau fakaveaga kua lau tatai mo e vāha ke lata mo e tau tutaki lotu.

Levekiaga he Assembly Standing Committee.

IULAI 2024-IUNI 2027

#### B. TUTAKI FAKALATAHA KE MOUI OLAOLA E AGAAGA HE TAU FAKAAKOAGA FAKAATUA

- Potaaga he tau Aoga Theological College he motu katoa.
- Fakatokatoka e National Theological Culture.
- Gahua fakaako fakaAtua mae gahua 'eke tutaki', gahua 'fakaevagelia', mo e tau 'fakapotopotoaga fakatiakono'.

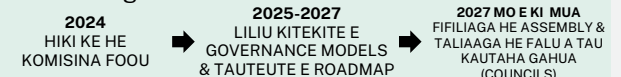
Levekiaga he Commission for Theology, Formation and Leadership.

IULAI 2024-IULAI 2027

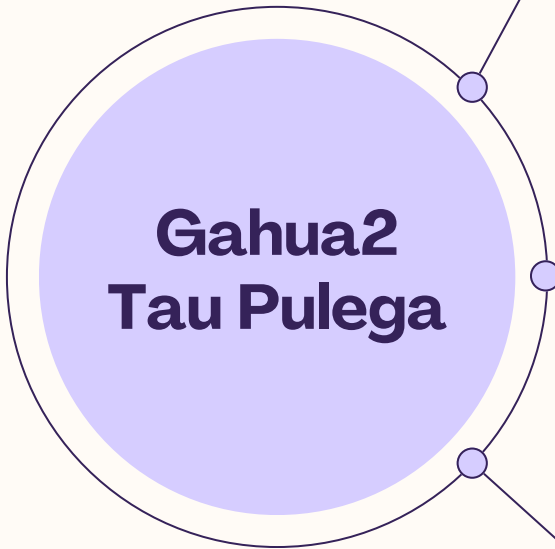
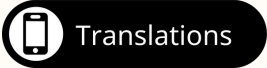
#### C. FAKAFEHELEAKI E MOUI MO E TAU MONUINA

- Taute taha kumikumiaga mo e tiviaga hagaa ia ke he tau pulega mae 'three council model' mo e 'four council model'.
- Talaga e puhala fakagahua (roadmap) ke fakaaoga fakalataha mo e puhala fakakoloa (resourcing model).
- Mailoga mo e fakagahua falu a fakatokaaga ke holo ki mua e Fakatilaaga (Vision) mo e tau Fakavēaga gahua (Principles).

Levekiaga he Commission for Governance, Resourcing and Administration.



IULAI 2024-2027



Tau fakamaama katoa, kumi atu e Tohi Gahua2: Ko e Mena Fakaalofa he Agaaga (Veveheaga 7 Fakatauō Auloa ki Mua: Ko e Puhala ki Mua)

FAKATILAAGA KI MUA



### A. Fakapotopotoaga Foaki Moui he tau Tutaki mo e Gahua FakaMisiona

To fakatūmau he tau Fakapotopotoaga he Atua e moui tapuaki, featihake fakalataha ke he fakaalofa, fakatokologa e tau tutaki ma lesu mo e gahua auloa ke he gahua misiona he Atua. To fakatonutonu he tau Fakapotopotoaga kehekehe he Atua e tau momoui ke tali atu ke he ui he Atua ke he tau mena ni ne hahā i ai a lautolu, kia hokulo e fakafetuiaga mo e Atua, mo e falu, ti pihia mo e lalolagi katoa.

TAU HIKIHIKIAGA

Fakavē ke he gahua eke tutaki mo e misiona

Ko e koloa lagomatai foou (toolkit) kua lata tonu mae tau puhala fakagahua

Ko e kamataaga mo e fakaotiaga kua hagahaga mitaki mae tau fakapotopotoaga

Liliu onoono ke he tau fakaveaga kua lau tatai mo e vāha ke lata mo e tau tutaki he Ekalesia

FAKATILAAGA KI MUA



### B. Ko e Kautaha (Network) mae Moui Olaola e Agaaga he tau Fakaakoaga FakaAtua

Ko e kautaha lagomatai kua kitia mo e mukamuka ke kumi lagomatai ki ai, kua gahua hololoa ke fakaako mo e fakakoloa e tau tagata ke mumui atu kia lesu mo e nakai matakutaku; gahua fakalataha mo e Atua ke he haana misiona ki Australia ainei.

TAU HIKIHIKIAGA

Potaaga he tau Aoga Theological College he motu katoa.

Fakatokatoka e National Theological Culture.

Gahua fakaako fakaAtua mae gahua 'eke tutaki', gahua 'fakaevagelia', mo e tau 'fakapotopotoaga fakatiakono'.

FAKATILAAGA KI MUA



### C. Fakafeheleaki e Moui mo e tau Monuina

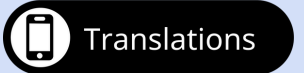
Ko e matakau he tau kautaha kua fematutaki mo e omaoma ke he uiaga he Atua ke foaki e tau momoui mae gahua fakamisiona ki lalo hifo he levekiaga Ministry and Mission, fiafia ke he fulufuluola he tau mena kehekehe mo e tau mena kua auloa ki ai, ko e tau fekafekau leveki kua fakamooli ke he tau taoga.

TAU HIKIHIKIAGA

Taute taha kumikumiaga mo e tiviaga hagai ia ke he tau pulega mae 'three council model' mo e 'four council model'.

Talaga e puhala fakagahua (roadmap) ke fakaaoga fakalataha mo e puhala fakakoloa (resourcing model).

Mailoga mo e fakagahua falu a fakatokaaga ke holo ki mua e Fakatilaaga (Vision) mo e tau Fakavēaga gahua (Principles).



# Fakapotopotoa ga Foaki Moui he tau Tutaki mo e Gahua FakaMisiona

Iulai 2024-Iuni 2027

Tau matakupu mahuiga he fakaholoaga nei:

- Ko e puhala he Ekalesia ke fakaaoga fakamahao e tau koloa mae gahua eke tutaki mo e gahua fakamisiona.
- Tau Matafakatufono (Regulations) foou mae tau fakaholoaga gahua.
- Tau hikihihiaga he Tohi Fakavē mo e tau Matafakatufono mae tau tutaki he Ekalesia ke fakatū he Fonoaga lahi (Assembly) ke 18 aki (Iulai 2027).

Ko e fakaholoaga nei to leveki ai he Komiti Fakatonu he Assembly.



Iulai 2024 - matutaki ki mua Ekalesia maopoopo ke fakaaoga fakamahao e tau koloa mae gahua eke tutaki mo e gahua fakamisiona.





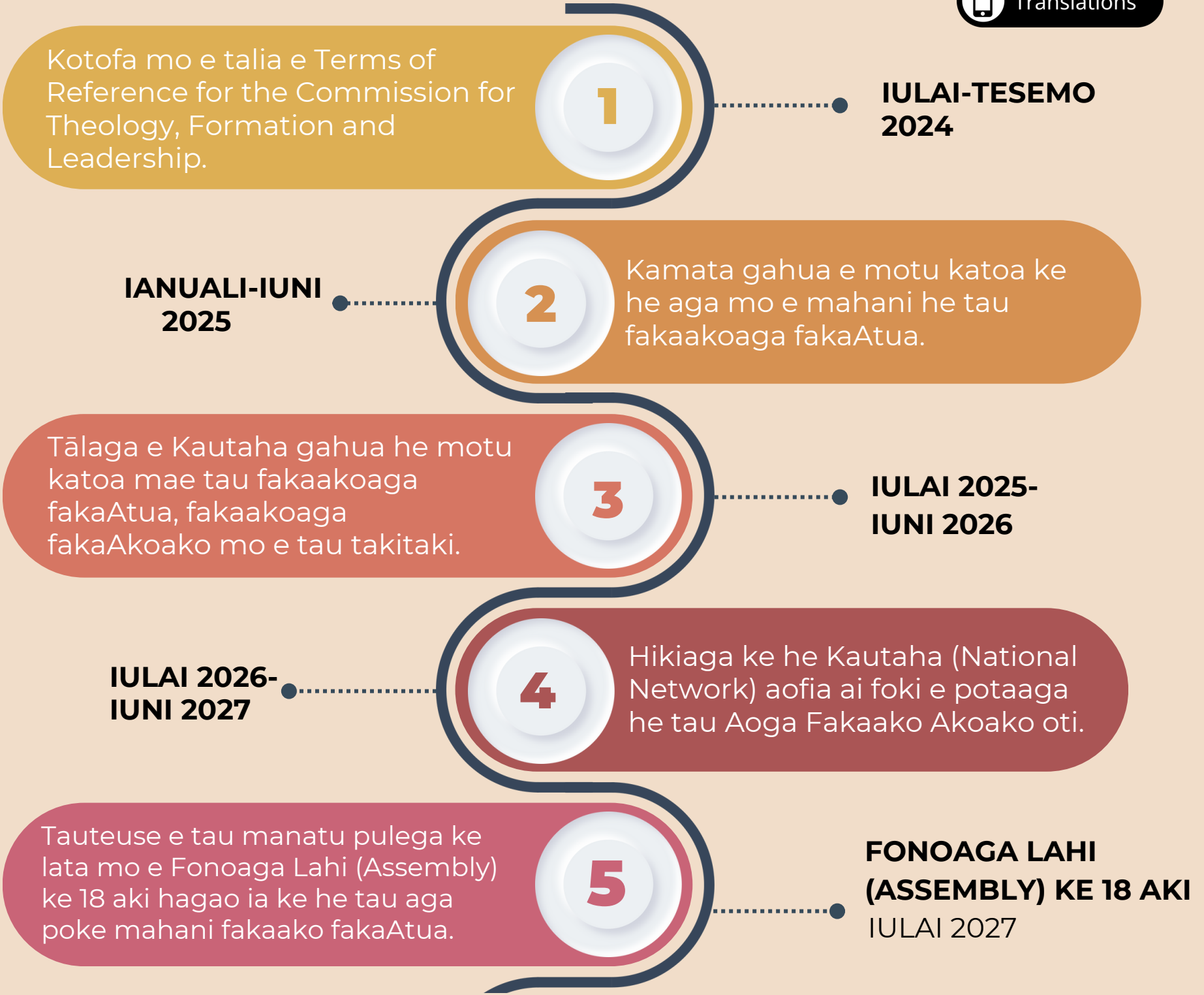
# Ko e Kautaha (Network) mae Moui Olaola e Agaaga he tau Fakaakoaga FakaAtua

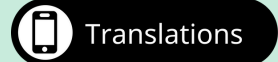
Iulai 2024-Iulai 2027

Tau matakupu mahuiga he fakaholoaga nei:

- Tālaga mo e hiki fakafoou ke he National Network for Theology, Formation and Leadership.
- Potaaga he tau Aoga Theological College he motu katoa.
- Gahua fakaako fakaAtua mae gahua 'eke tutaki', gahua 'fakaevagelia', mo e tau 'fakapotopotoaga fakatiakono'.

Ko e fakaholoaga nei to leveki ai he Commission for Theology, Formation and Leadership.





# Fakafeheleaki ha talu tau Momoui mo e ha tautolu a tau Koloa.

Iulai 2024-Iulai 2027

Ko e fakaholoaga nei to fakapapahi ai ke he tolu e veveheaga.

- **Hikiaga (Iulai-Tesemo 2024):** Hikiaga ke he Commission for Governance, Resourcing and Administration.
- **Liu Onono mo e Tauteute (Ianuali 2025-Iuni 2027):** Onono matafeiga ke he fakaholoaga gahua mae anoiha. Fakamailoga falu a puhala foki ke holo ki mua e Fakatilaaga (Vision) mo e tau Fakavēaga gahua (Principles). Tauteute e tau hokotaki, tau manatu pulega mo e fakatoka e magaaho ke fifili ki ai e Assembly ke 18 aki.
- **Fifiliaga mo e Taliaaga (Iulai 2027):** Fifili ki ai e Fonoaga Lahi (Assembly) ke 18 aki mo e taliaaga e tau hikiaga ke he tau Matafakatufono.

Ko e fakatokaaga nei to toka ai ke he levekiaga he Commission for Governance, Resourcing and Administration.

